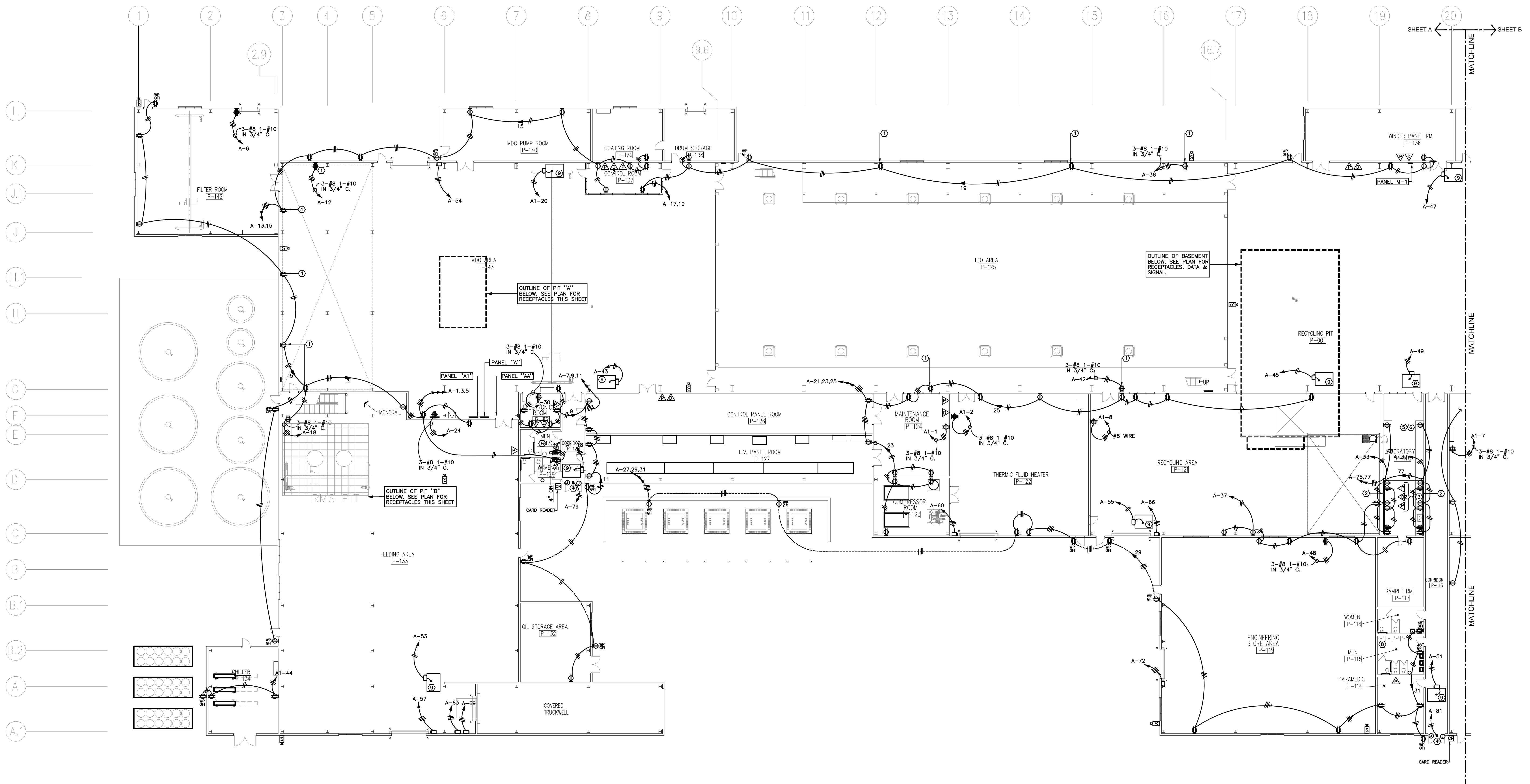


DATE	REVISION
NOV. 11, 11	VALUE ENGINEERING RE-DESIGN DOCUMENT
JAN. 20, 12	REVISIONS ASSOCIATED WITH REVISED FLOOR PLAN

PROJECT NO. 8529-02  
 DESIGNED BY SHT  
 DRAWN BY LVB  
 CHECKED BY TRW  
 REVIEWED BY SHT  
 DATE: JULY 2011  
 SCALE: AS NOTED

**MS&E**  
**OF KENTUCKY, INC.**  
 Engineers  
 Architects  
 Planners  
 824 Wellington Way  
 Lexington, KY 40503  
 Phone: (606) 223-5684  
 Fax: (606) 223-2697  
 www.ms&e.com

DRAWING NO.  
**UFL-L12**  
**E-003A**



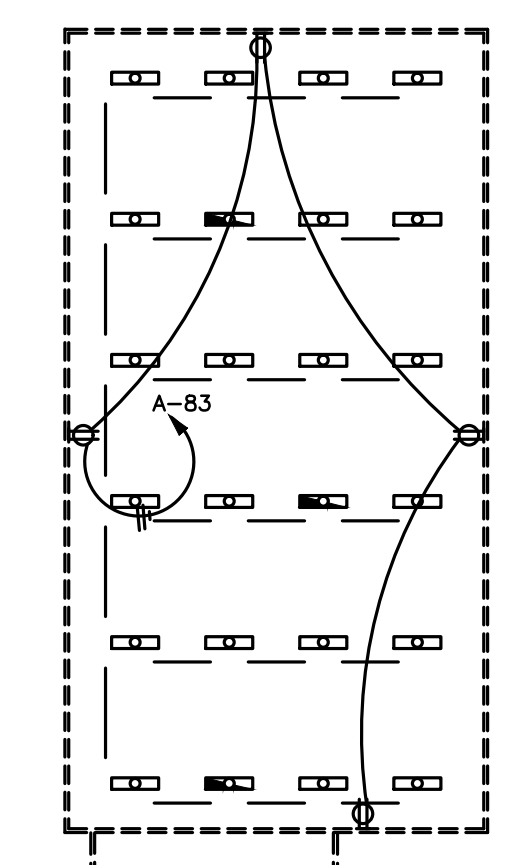
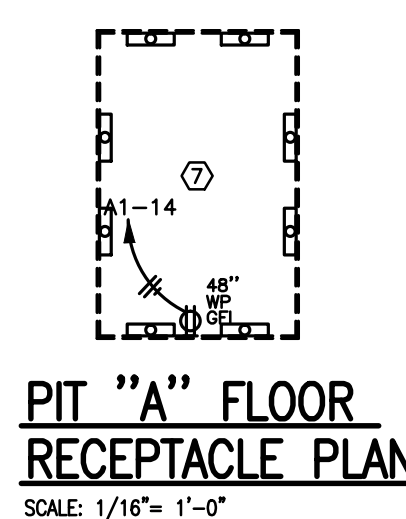
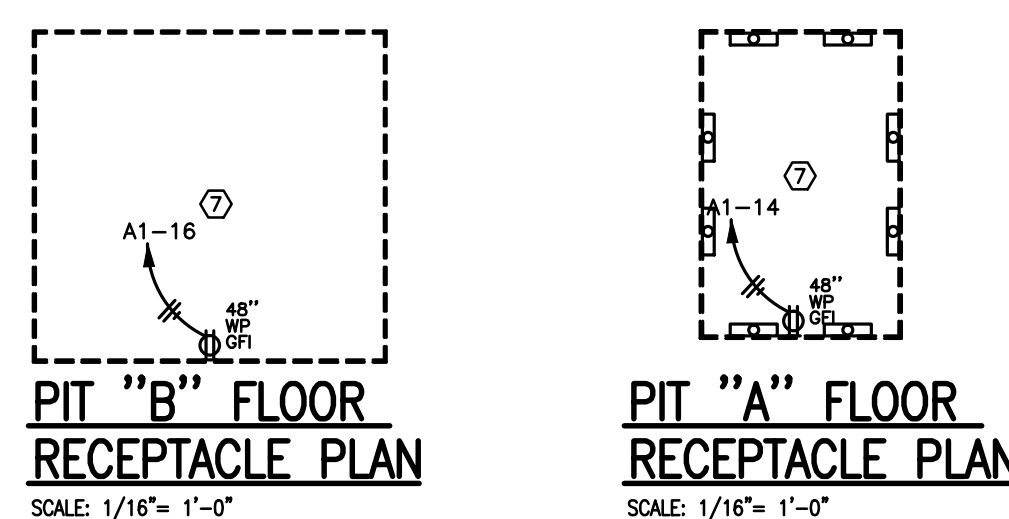
**PARTIAL FIRST FLOOR RECEPTACLES, SIGNAL, DATA PLAN**  
 SCALE: 1/16" = 1'-0"

**SHEET NOTES:**

- ① RECEPTACLES LOCATED UNDER MEZZANINE.
- ② MOUNT WIREMOLD ABOVE COUNTER TOP.
- ③ MOUNT DATA OUTLET & PHONE OUTLET ABOVE WIREMOLD.
- ④ ELECTRIC DOOR STRIKE WITH CARD READER. ACCESS ROUTE CABLEING DOWN THROUGH DOOR FROM ELECTRIC STRIKE.
- ⑤ ALL CONDUITS FOR RECEPTACLES, DATA, WIREMOLD TO BE AT LEAST 24" ABOVE FLOOR SLAB IN WALLS.
- ⑥ MOUNT ALL RECEPTACLES IN THIS ROOM AT SAME HEIGHT AS DATA, PHONE OUTLET.
- ⑦ CONTRACTOR TO LOCATE RECEPTACLE AT LADDER, SEE ARCHITECTURAL DETAILS.
- ⑧ CONTRACTOR TO PROVIDE & WIRE TRANSFORMER FOR URINAL ELECTRONIC AUTOMATIC FLUSH VALVES.
- ⑨ INSPECTOR/BUS KILLER: SERIES S MODEL, 500V OR EQUIVALENT BUS PREVENTION/KILLING DEVICE.

**GENERAL NOTES:**

A. ALL DISCONNECT SWITCHES TO BE 30 AMP, UNLESS OTHERWISE NOTED.



**BASEMENT FLOOR RECEPTACLE PLAN**  
 SCALE: 1/16" = 1'-0"

